

## STAGEMAKER®

# Flight cases

A broad range of flight cases specially designed for the STAGEMAKER® motors and controllers is available.

### STAGEMAKER® SR hoist range of flightcases

## >Premium

- > Configuration type "trunk".
- > Top hinge cover
- > Panel all Birch shot 9 mm finish hexa black ultra resistant.
- > 2 fasteners recessed Butterfly (PENN).
- > 2 stop cover (PENN).
- > 8 recessed spring-loaded handles (PENN).
- > 4 casters 2 locking on turntables D100.
- > 4 cup stacking.
- > Tipage pads on the sides.

- > 2 visualization windows.
- > Sticker STAGEMAKER® Marking.
- > Sticker production plate.

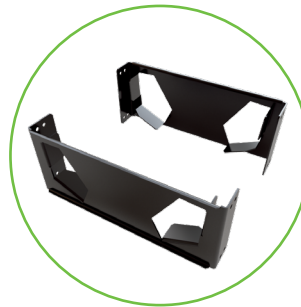
#### Inside disposition

- > Mobile Cribs Sheet for easy version or double brake (ajustables).
- > 2 Trays chain at the center.

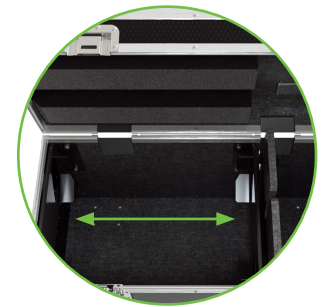


Designation	Dimensions (mm)
Flight case for 2 x SR1 (simple or double brake)	510 x 410 x 550
Flight case for 4 x SR1 (simple or double brake)	760 x 510 x 550
Flight case for 6 x SR1 (simple or double brake)	1110 x 510 x 550
Flight case for 1 x SR5 (simple or double brake)	615 x 600 x 540
Flight case for 2 x SR5 (simple or double brake)	1130 x 595 x 605
Flight case for 1 x SL5 (simple or double brake)	620 x 600 x 570
Flight case for 2 x SL5 (simple or double brake)	990 x 600 x 570
Flight case for 1 x SR10 (simple or double brake)	660 x 630 x 590
Flight case for 2 x SR10 (simple or double brake)*	1200 x 630 x 655
Flight case for 1 x SL10 (simple or double brake)*	910 x 470 x 655
Flight case for 2 x SL10 (simple or double brake)	1230 x 670 x 655
Flight case for 2 x SR25 (simple or double brake)	800 x 600 x 755

\* Not recommended cause of final weight, please prefer solution of flight case solo.



Perfect shape of the brackets to secure the hoist at bumper level.



Adjusting brackets to fit with hoist configuration (1 or 2 brakes).

## >Eco

- > Configuration type "trunk".
- > Cover top hinge.
- > Panel all Birch shot 9 mm.
- > 2 fasteners recessed Butterfly (PENN).
- > 2 stop cover (PENN).
- > 4 recessed spring-loaded handles (PENN).
- > 4 casters 2 locking on turntables D100.

- > Sticker STAGEMAKER® Marking.
- > Sticker production plate.

#### Inside disposition

- > Mobile Cribs Sheet for easy version or double brake (ajustables).
- > 2 trays chain at the center.

Designation	Dimensions (mm)
Flight case for 2 x SR1 (simple or double brake)	510 x 410 x 550
Flight case for 4 x SR1 (simple or double brake)	760 x 510 x 550
Flight case for 6 x SR1 (simple or double brake)	1110 x 510 x 550
Flight case for 1 x SR5 (simple or double brake)	615 x 600 x 540
Flight case for 2 x SR5 (simple or double brake)	1130 x 595 x 605
Flight case for 1 x SL5 (simple or double brake)	620 x 600 x 570
Flight case for 2 x SL5 (simple or double brake)	990 x 600 x 570
Flight case for 1 x SR10 (simple or double brake)	660 x 630 x 590
Flight case for 2 x SR10 (simple or double brake)*	1200 x 630 x 655
Flight case for 1 x SL10 (simple or double brake)*	910 x 470 x 655
Flight case for 2 x SL10 (simple or double brake)	1230 x 670 x 655
Flight case for 1 x SR25 (simple or double brake)	800 x 600 x 755

\* Not recommended cause of final weight, please prefer solution of flight case solo.



## > Base

- > Type tray handling.
- > Panel all Birch black.
- > 2 handles pierced in the side posts.
- > Stacking bins, 2 skates on top.
- > Separate storage area for the chain.
- > Sticker STAGEMAKER® Marking.

Designation	Dimensions (mm)
Tray handling for 1 x SR2 (simple or double brake)	470 x 540 x 405
Tray handling for 1 x SR5 (simple or double brake)	515 x 580 x 405
Tray handling for 1 x SR10 (simple or double brake)	650 x 600 x 440



## STAGEMAKER® SR controller range of flightcases



## > Premium

- > Configuration type flat flight case for Rack 19" and multiple of U dimensions.
- > Front and back moulded plastic cover.
- > Panel all Birch shot 9 mm finish hexa black ultra resistant.
- > 4 recessed spring-loaded handles.
- > 4 cup stacking.

**Inside disposition**  
 > Controller push inside along rail in drawer position type.

## > Eco

- > Configuration type flat flight case for Rack 19" and multiple of U dimensions.
- > Front and back moulded plastic cover.
- > Panel all Birch shot 9 mm.
- > 4 recessed spring-loaded handles.
- > 4 cup stacking.

**Inside disposition**  
 > Controller push inside along rail in drawer position type.

