

No.	DESCRIPTION	MATERIAL	Q'TY	WEIGHT(kg)		REMARK
				UNIT	TOTAL	

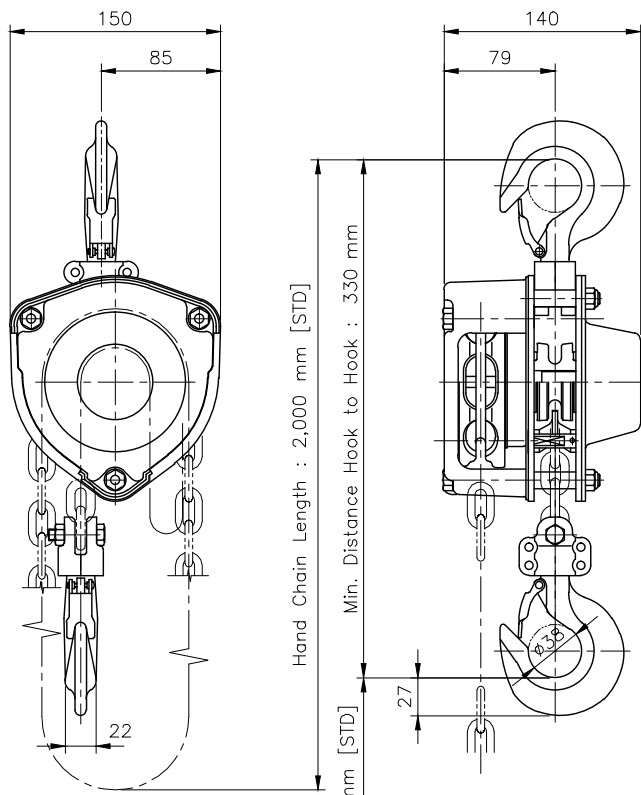
SPECIFICATION		
Item	CHAIN BLOCK	
Model	ZHV 1 LW ZHV 1 LW CP ZHV 1 LW EX	
Capacity	0.5 Ton	
Test Load	0.75 Ton	
Min. distance hook to hook	330 mm	
Lift	2.5 Meter [STD]	
Hand Chain Length	2.0 Meter [STD]	
Pulling effort	18.0 Kgf [STD]	
No. of falls	1 Fall	
Load chain spec'	Size	ø 6.3 x P 19.0 x W 21.0
	weight	0.86 Kg/ Meter
Hand chain spec'	Size	ø 5.0 x P 23.3 x W 18.0
	weight	0.92 Kg/ Meter
Paint color	Maker Standard	
Net weight	10.5 Kgf [STD]	

NO.	DATE	DESCRIPTION	REV.	CONFIRMED BY

SCALE	1 : 5	WEIGHT	Kg	DWG NAME	CHAIN BLOCK 0.5 TON
CHK. BY					ASSEMBLY DWG
DSN. BY				DWG No.	ZHV 1 LW
DWN. BY				DWG DATE	2007 . 09 . 05

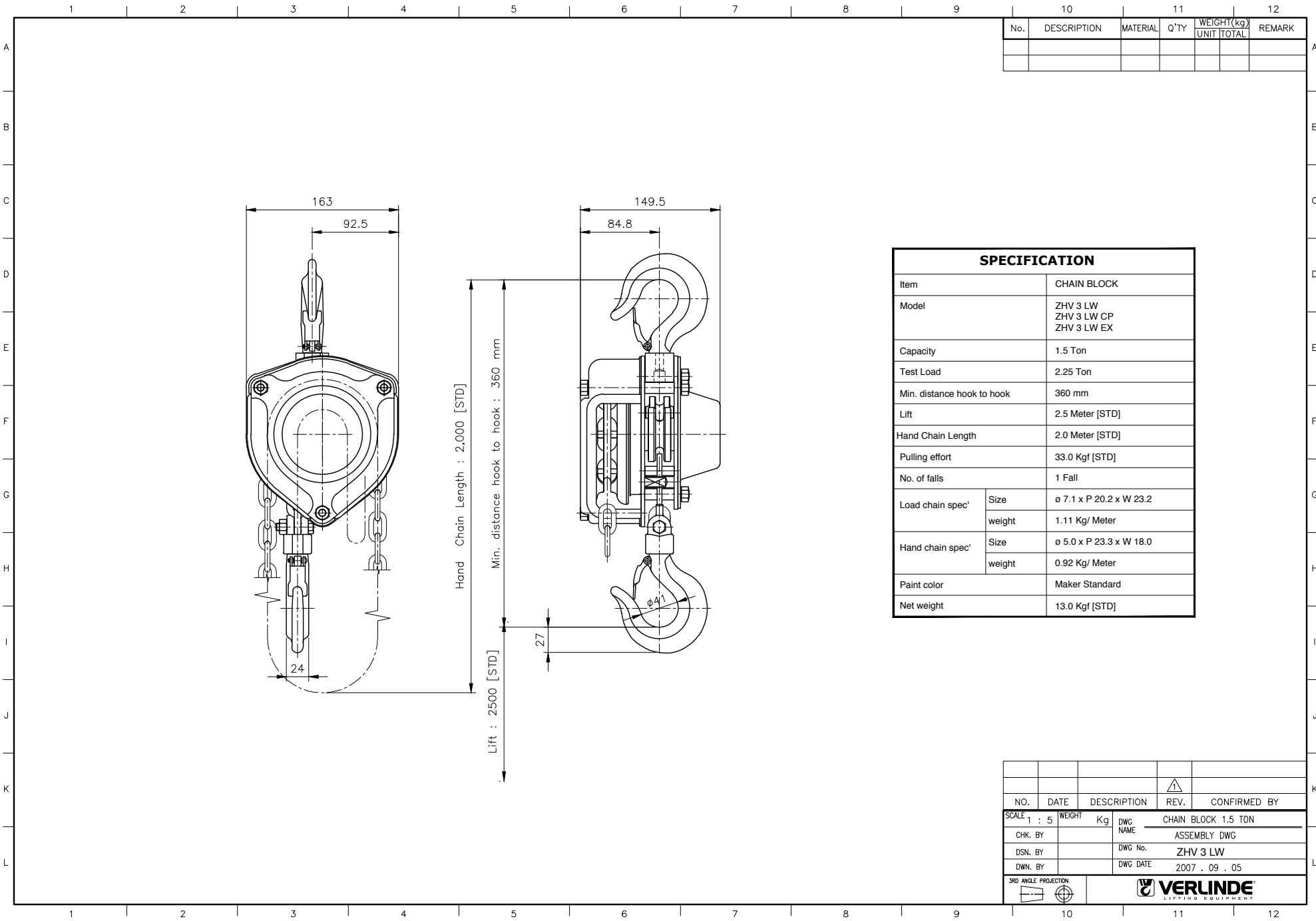


No.	DESCRIPTION	MATERIAL	Q'TY	WEIGHT(kg)		REMARK
				UNIT	TOTAL	



SPECIFICATION		
Item	CHAIN BLOCK	
Model	ZHV 2 LW ZHV 2 LW CP ZHV 2 LW EX	
Capacity	1.0 Ton	
Test Load	1.5 Ton	
Min. distance hook to hook	330 mm	
Lift	2.5 Meter [STD]	
Hand Chain Length	2.0 Meter [STD]	
Pulling effort	33.0 Kgf [STD]	
No. of falls	1 Fall	
Load chain spec'	Size	ø 6.3 x P 19.0 x W 21.0
	weight	0.86 Kg/ Meter
Hand chain spec'	Size	ø 5.0 x P 23.3 x W 18.0
	weight	0.92 Kg/ Meter
Paint color	Maker Standard	
Net weight	10.5 Kgf [STD]	

NO.	DATE	DESCRIPTION	REV.	CONFIRMED BY	
SCALE	1 : 5	WEIGHT	Kg	CHAIN BLOCK 1.0 TON	
CHK. BY		DWG NAME	ASSEMBLY DWG		
DSN. BY		DWG No.	ZHV 2 LW		
DWN. BY		DWG DATE	2007 . 09 . 05		
3RD ANGLE PROJECTION		VERLINDE LIFTING EQUIPMENT			



No.	DESCRIPTION	MATERIAL	Q'TY	WEIGHT (kg)		REMARK
				UNIT	TOTAL	

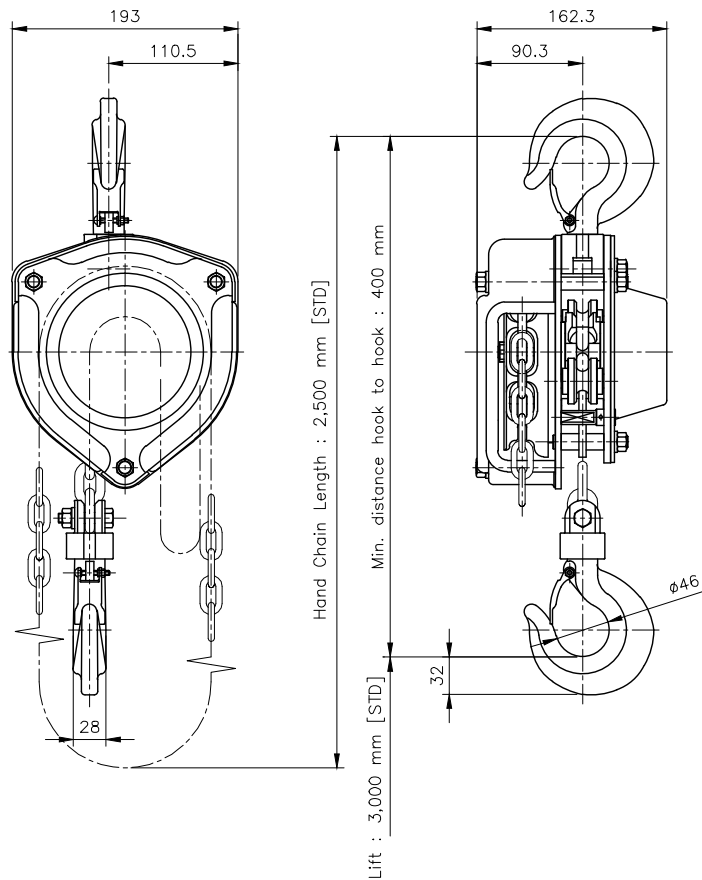
SPECIFICATION		
Item	CHAIN BLOCK	
Model	ZHV 3 LW ZHV 3 LW CP ZHV 3 LW EX	
Capacity	1.5 Ton	
Test Load	2.25 Ton	
Min. distance hook to hook	360 mm	
Lift	2.5 Meter [STD]	
Hand Chain Length	2.0 Meter [STD]	
Pulling effort	33.0 Kg [STD]	
No. of falls	1 Fall	
Load chain spec'	Size	ø 7.1 x P 20.2 x W 23.2
	weight	1.11 Kg/ Meter
Hand chain spec'	Size	ø 5.0 x P 23.3 x W 18.0
	weight	0.92 Kg/ Meter
Paint color	Maker Standard	
Net weight	13.0 Kg [STD]	

NO.	DATE	DESCRIPTION	REV.	CONFIRMED BY

SCALE	1 : 5	WEIGHT	Kg	DWG	CHAIN BLOCK 1.5 TON
CHK. BY		DWG	NAME	ASSEMBLY DWG	
DSN. BY		DWG	No.	ZHV 3 LW	
DWN. BY		DWG	DATE	2007 . 09 . 05	

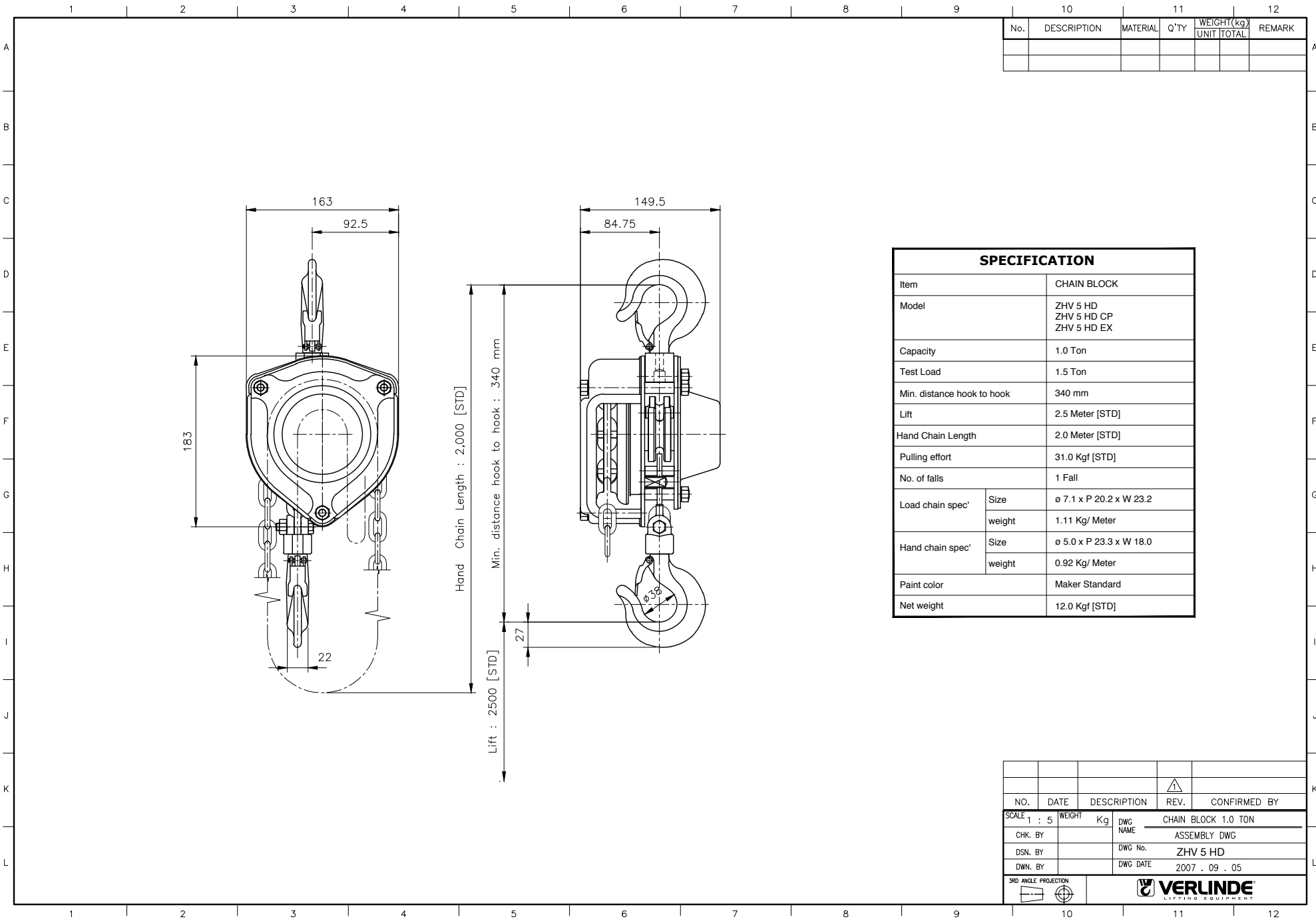
3RD ANGLE PROJECTION			VERLINDE
LIFTING EQUIPMENT		LIFTING EQUIPMENT	

No.	DESCRIPTION	MATERIAL	Q'TY	WEIGHT (kg)		REMARK
				UNIT	TOTAL	



SPECIFICATION		
Item	CHAIN BLOCK	
Model	ZHV 4 LW ZHV 4 LW CP ZHV 4 LW EX	
Capacity	2.0 Ton	
Test Load	3.0 Ton	
Min. distance hook to hook	400 mm	
Lift	3.0 Meter [STD]	
Hand Chain Length	2.5 Meter [STD]	
Pulling effort	34.0 Kgf [STD]	
No. of falls	1 Fall	
Load chain spec'	Size	ø 7.9 x P 23.0 x W 25.9
	weight	1.36 Kg/ Meter
Hand chain spec'	Size	ø 5.0 x P 23.3 x W 18.0
	weight	0.92 Kg/ Meter
Paint color	Maker Standard	
Net weight	20.0 Kgf [STD]	

NO.	DATE	DESCRIPTION	REV.	CONFIRMED BY
SCALE	1 : 6	WEIGHT	Kg	
CHK. BY		DWG NAME	CHAIN BLOCK 2.0 TON ASSEMBLY DWG	
DSN. BY		DWG No.	ZHV 4 LW	
DWN. BY		DWG DATE	2007 . 09 . 05	
3RD ANGLE PROJECTION		VERLINDE LIFTING EQUIPMENT		



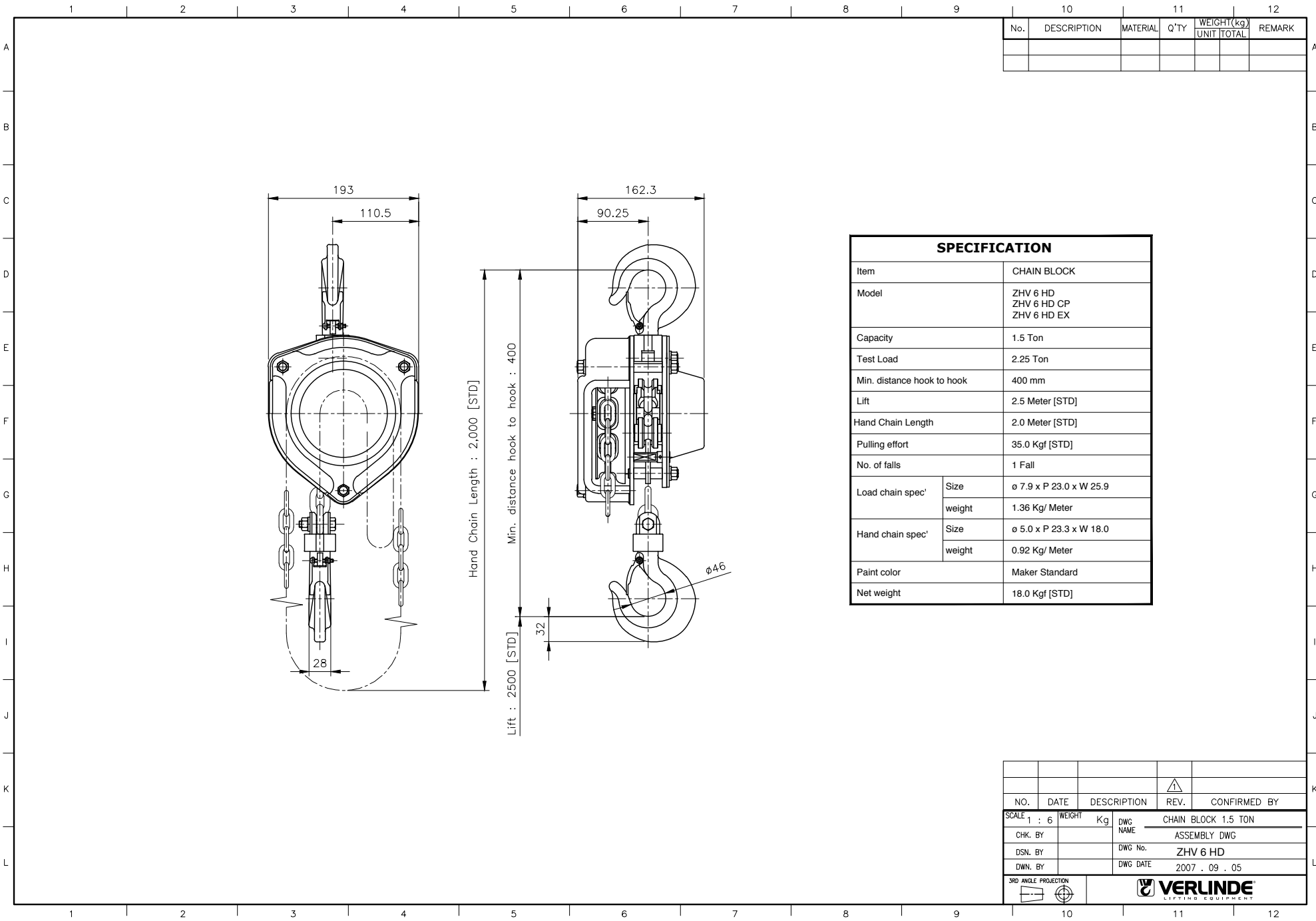
No.	DESCRIPTION	MATERIAL	Q'TY	WEIGHT (kg)		REMARK
				UNIT	TOTAL	

SPECIFICATION		
Item	CHAIN BLOCK	
Model	ZHV 5 HD ZHV 5 HD CP ZHV 5 HD EX	
Capacity	1.0 Ton	
Test Load	1.5 Ton	
Min. distance hook to hook	340 mm	
Lift	2.5 Meter [STD]	
Hand Chain Length	2.0 Meter [STD]	
Pulling effort	31.0 Kgf [STD]	
No. of falls	1 Fall	
Load chain spec'	Size	ø 7.1 x P 20.2 x W 23.2
	weight	1.11 Kg/ Meter
Hand chain spec'	Size	ø 5.0 x P 23.3 x W 18.0
	weight	0.92 Kg/ Meter
Paint color	Maker Standard	
Net weight	12.0 Kgf [STD]	

NO.	DATE	DESCRIPTION	REV.	CONFIRMED BY

SCALE	1 : 5	WEIGHT	Kg	DWG	CHAIN BLOCK 1.0 TON
CHK. BY				NAME	ASSEMBLY DWG
DSN. BY				DWG No.	ZHV 5 HD
DWN. BY				DWG DATE	2007 . 09 . 05

3RD ANGLE PROJECTION			VERLINDE LIFTING EQUIPMENT
----------------------	--	--	--------------------------------------



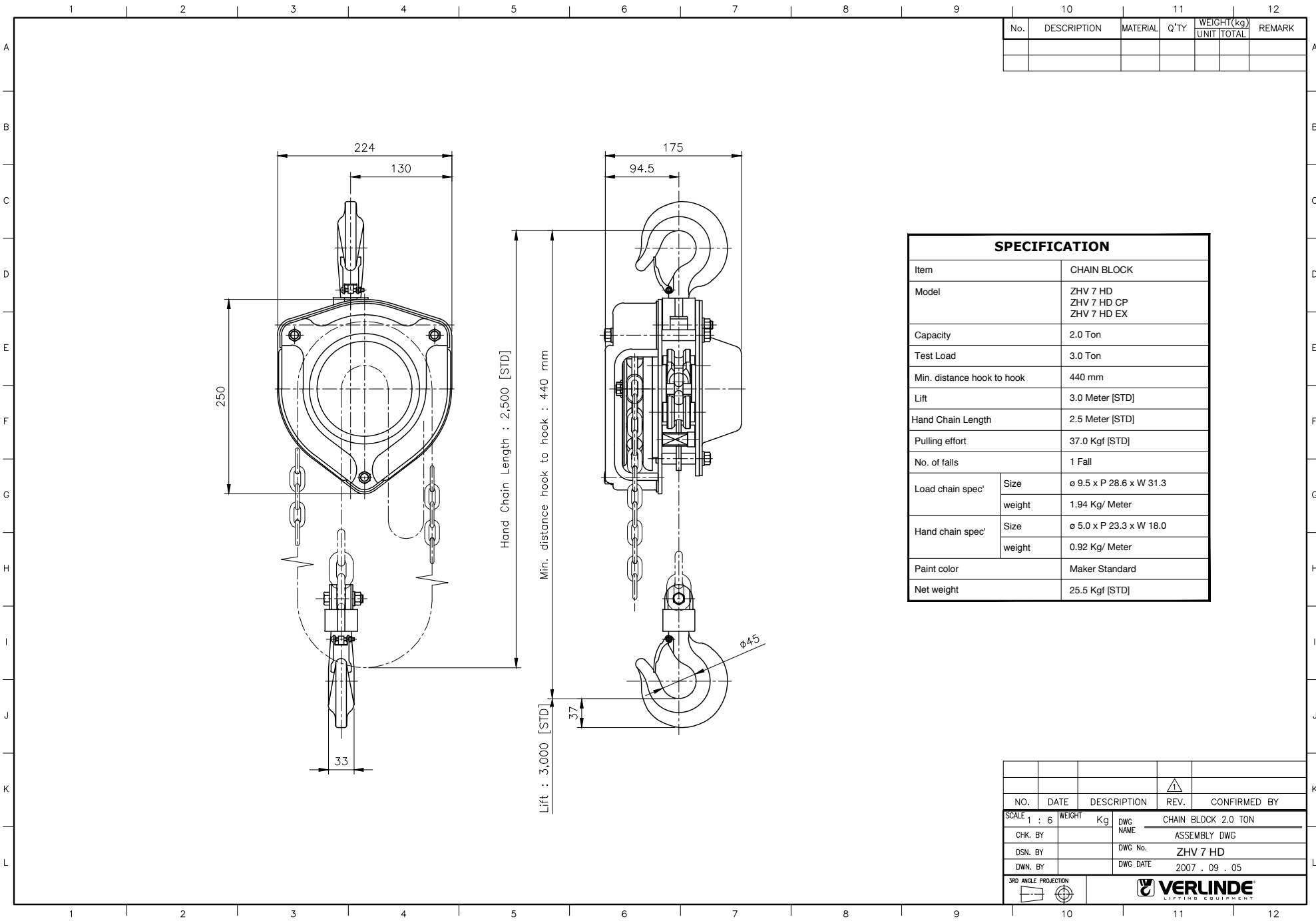
No.	DESCRIPTION	MATERIAL	Q'TY	WEIGHT(kg)		REMARK
				UNIT	TOTAL	

SPECIFICATION		
Item	CHAIN BLOCK	
Model	ZHV 6 HD ZHV 6 HD CP ZHV 6 HD EX	
Capacity	1.5 Ton	
Test Load	2.25 Ton	
Min. distance hook to hook	400 mm	
Lift	2.5 Meter [STD]	
Hand Chain Length	2.0 Meter [STD]	
Pulling effort	35.0 Kgf [STD]	
No. of falls	1 Fall	
Load chain spec'	Size	ø 7.9 x P 23.0 x W 25.9
	weight	1.36 Kg/ Meter
Hand chain spec'	Size	ø 5.0 x P 23.3 x W 18.0
	weight	0.92 Kg/ Meter
Paint color	Maker Standard	
Net weight	18.0 Kgf [STD]	

NO.	DATE	DESCRIPTION	REV.	CONFIRMED BY

SCALE	1 : 6	WEIGHT	Kg	DWG	CHAIN BLOCK 1.5 TON
CHK. BY				NAME	ASSEMBLY DWG
DSN. BY				DWG No.	ZHV 6 HD
DWN. BY				DWG DATE	2007 . 09 . 05

3RD ANGLE PROJECTION			VERLINDE LIFTING EQUIPMENT
----------------------	--	--	--------------------------------------



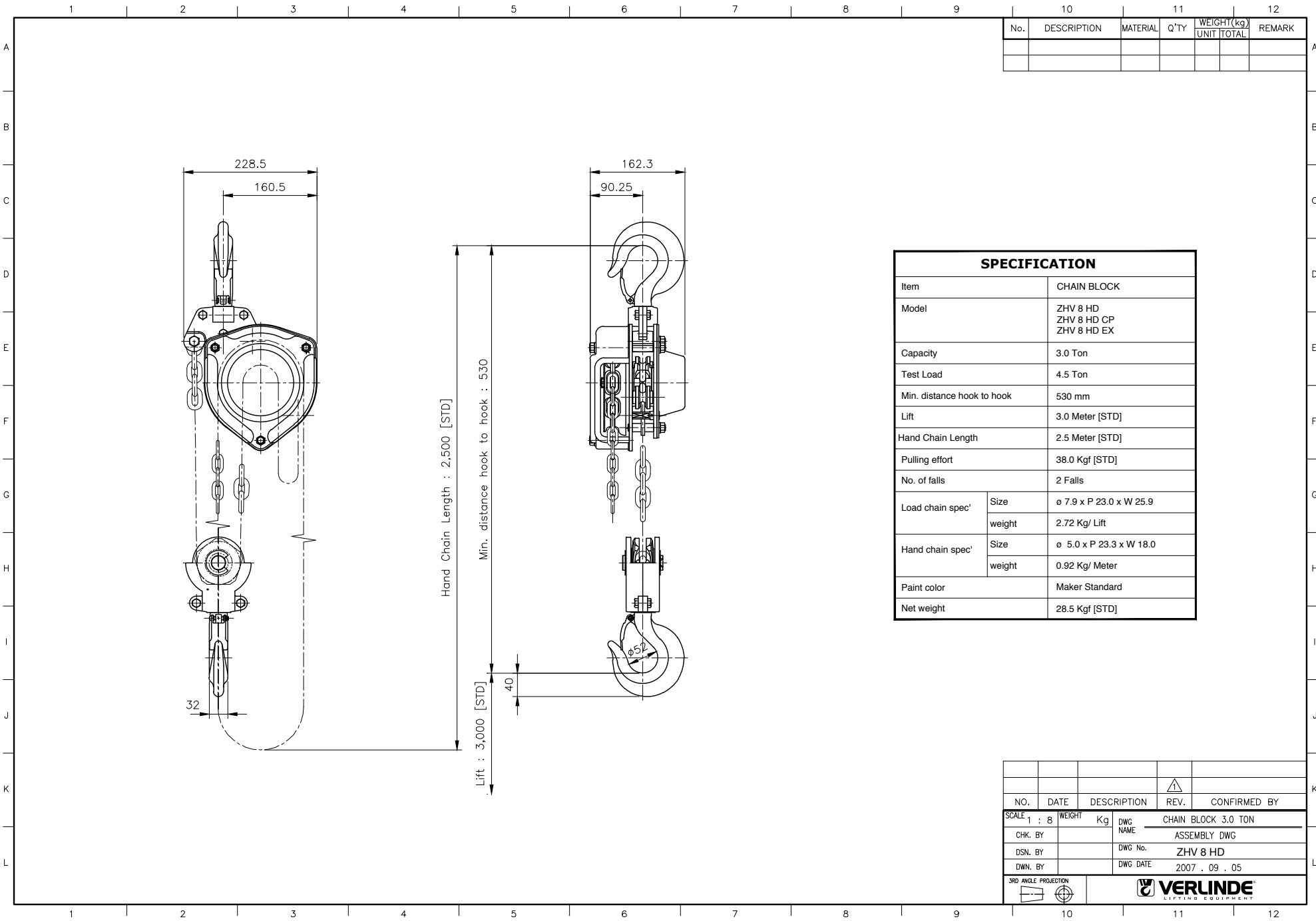
No.	DESCRIPTION	MATERIAL	Q'TY	WEIGHT (kg)		REMARK
				UNIT	TOTAL	

SPECIFICATION		
Item	CHAIN BLOCK	
Model	ZHV 7 HD ZHV 7 HD CP ZHV 7 HD EX	
Capacity	2.0 Ton	
Test Load	3.0 Ton	
Min. distance hook to hook	440 mm	
Lift	3.0 Meter [STD]	
Hand Chain Length	2.5 Meter [STD]	
Pulling effort	37.0 Kgf [STD]	
No. of falls	1 Fall	
Load chain spec'	Size	ø 9.5 x P 28.6 x W 31.3
	weight	1.94 Kg/ Meter
Hand chain spec'	Size	ø 5.0 x P 23.3 x W 18.0
	weight	0.92 Kg/ Meter
Paint color	Maker Standard	
Net weight	25.5 Kgf [STD]	

NO.	DATE	DESCRIPTION	REV.	CONFIRMED BY

SCALE	1 : 6	WEIGHT	Kg	DWG	CHAIN BLOCK 2.0 TON
CHK. BY				NAME	ASSEMBLY DWG
DSN. BY				DWG No.	ZHV 7 HD
DWN. BY				DWG DATE	2007 . 09 . 05

3RD ANGLE PROJECTION			VERLINDE LIFTING EQUIPMENT
----------------------	--	--	--------------------------------------



No.	DESCRIPTION	MATERIAL	Q'TY	WEIGHT(kg)		REMARK
				UNIT	TOTAL	

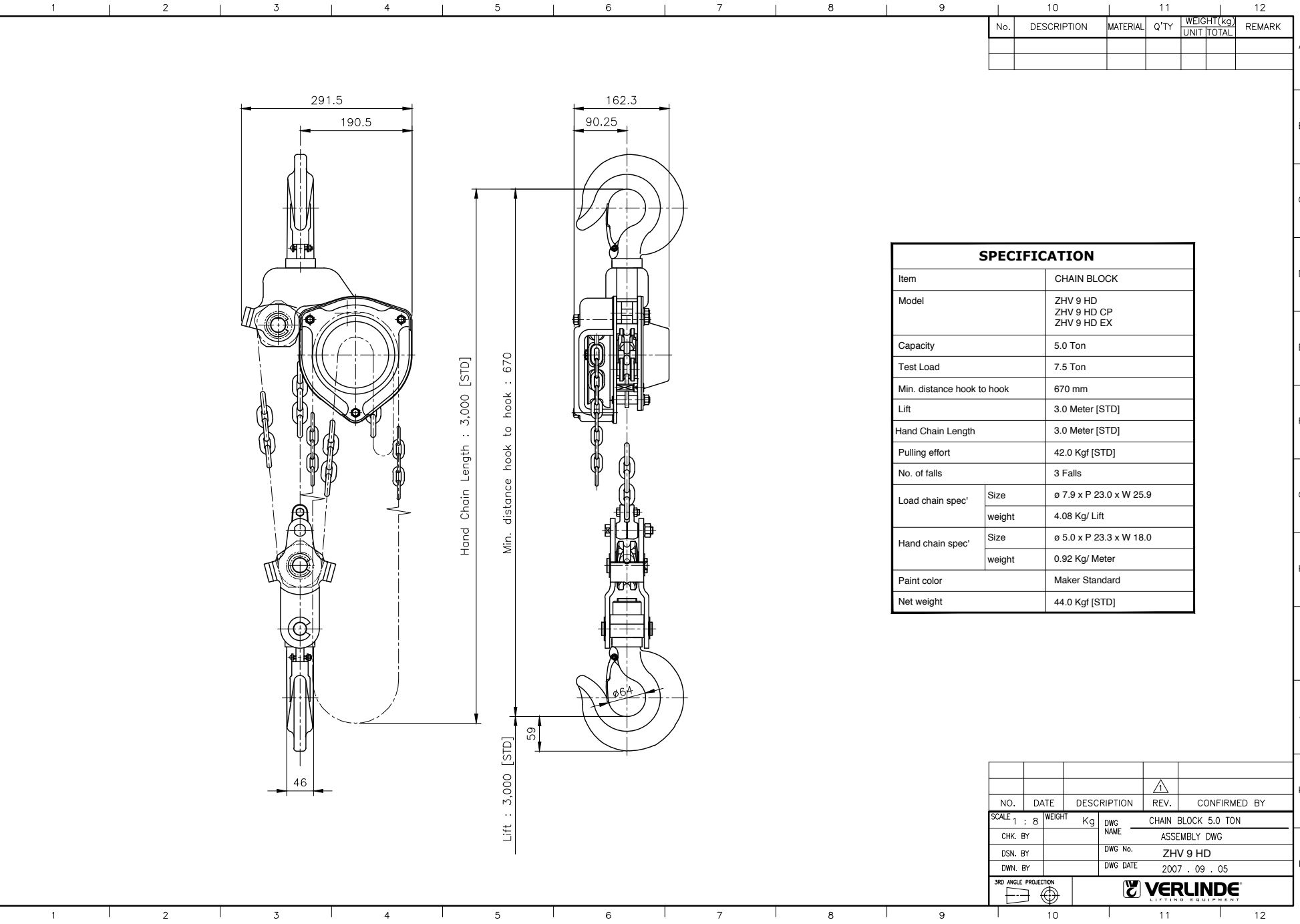
SPECIFICATION		
Item	CHAIN BLOCK	
Model	ZHV 8 HD ZHV 8 HD CP ZHV 8 HD EX	
Capacity	3.0 Ton	
Test Load	4.5 Ton	
Min. distance hook to hook	530 mm	
Lift	3.0 Meter [STD]	
Hand Chain Length	2.5 Meter [STD]	
Pulling effort	38.0 Kgf [STD]	
No. of falls	2 Falls	
Load chain spec'	Size	ø 7.9 x P 23.0 x W 25.9
	weight	2.72 Kg/ Lift
Hand chain spec'	Size	ø 5.0 x P 23.3 x W 18.0
	weight	0.92 Kg/ Meter
Paint color	Maker Standard	
Net weight	28.5 Kgf [STD]	

NO.	DATE	DESCRIPTION	REV.	CONFIRMED BY

SCALE	1 : 8	WEIGHT	Kg	DWG	CHAIN BLOCK 3.0 TON
CHK. BY				NAME	ASSEMBLY DWG
DSN. BY				DWG No.	ZHV 8 HD
DWN. BY				DWG DATE	2007 . 09 . 05

3RD ANGLE PROJECTION

VERLINDE
LIFTING EQUIPMENT



No.	DESCRIPTION	MATERIAL	Q'TY	WEIGHT (kg)		REMARK
				UNIT	TOTAL	

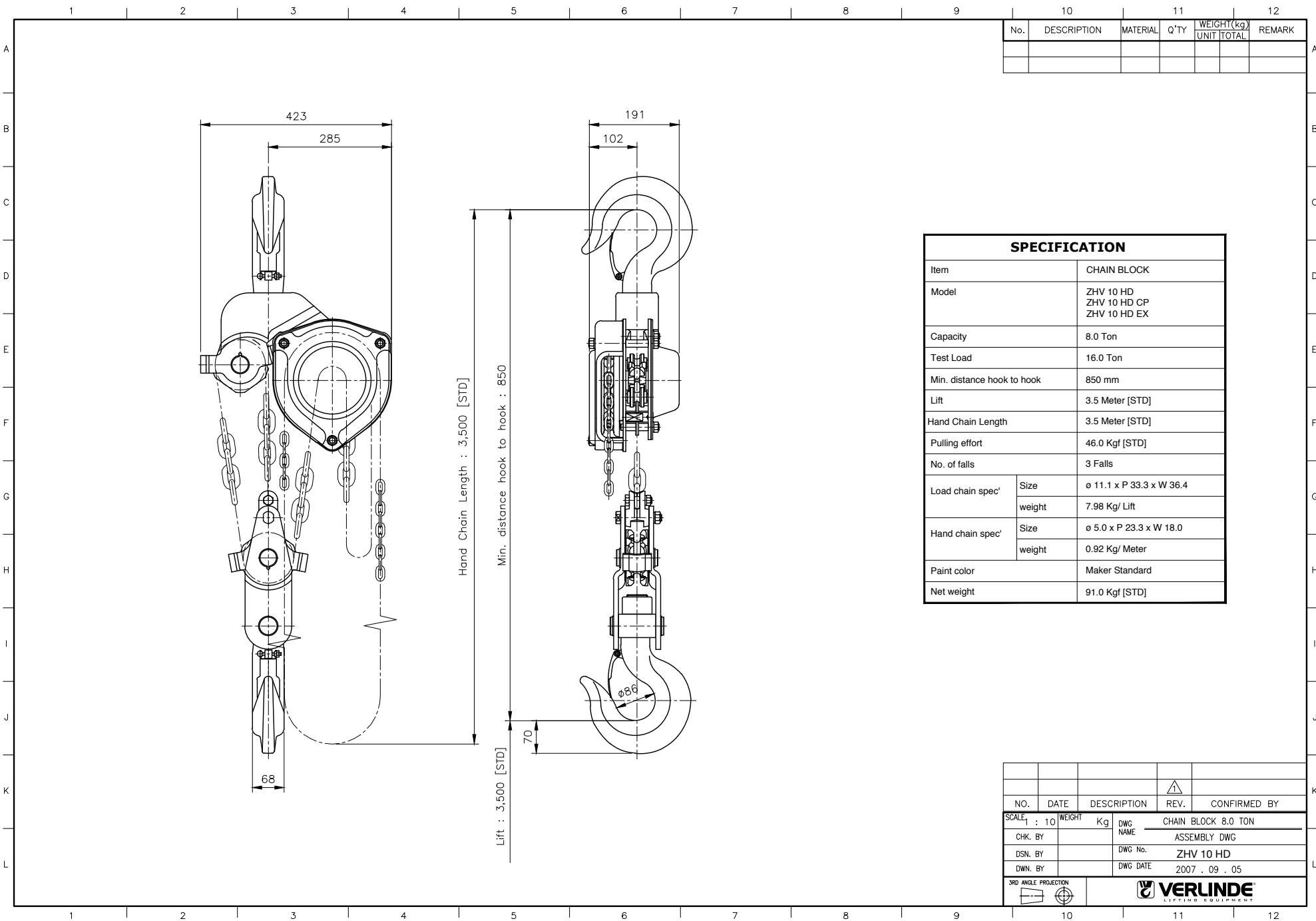
SPECIFICATION		
Item	CHAIN BLOCK	
Model	ZHV 9 HD ZHV 9 HD CP ZHV 9 HD EX	
Capacity	5.0 Ton	
Test Load	7.5 Ton	
Min. distance hook to hook	670 mm	
Lift	3.0 Meter [STD]	
Hand Chain Length	3.0 Meter [STD]	
Pulling effort	42.0 Kgf [STD]	
No. of falls	3 Falls	
Load chain spec'	Size	ϕ 7.9 x P 23.0 x W 25.9
	weight	4.08 Kg/ Lift
Hand chain spec'	Size	ϕ 5.0 x P 23.3 x W 18.0
	weight	0.92 Kg/ Meter
Paint color	Maker Standard	
Net weight	44.0 Kgf [STD]	

NO.	DATE	DESCRIPTION	REV.	CONFIRMED BY

SCALE	1 : 8	WEIGHT	Kg	DWG NAME	CHAIN BLOCK 5.0 TON
CHK. BY				DWG No.	ASSEMBLY DWG
DSN. BY				DWG No.	ZHV 9 HD
DWN. BY				DWG DATE	2007 . 09 . 05

3RD ANGLE PROJECTION			
----------------------	--	--	--

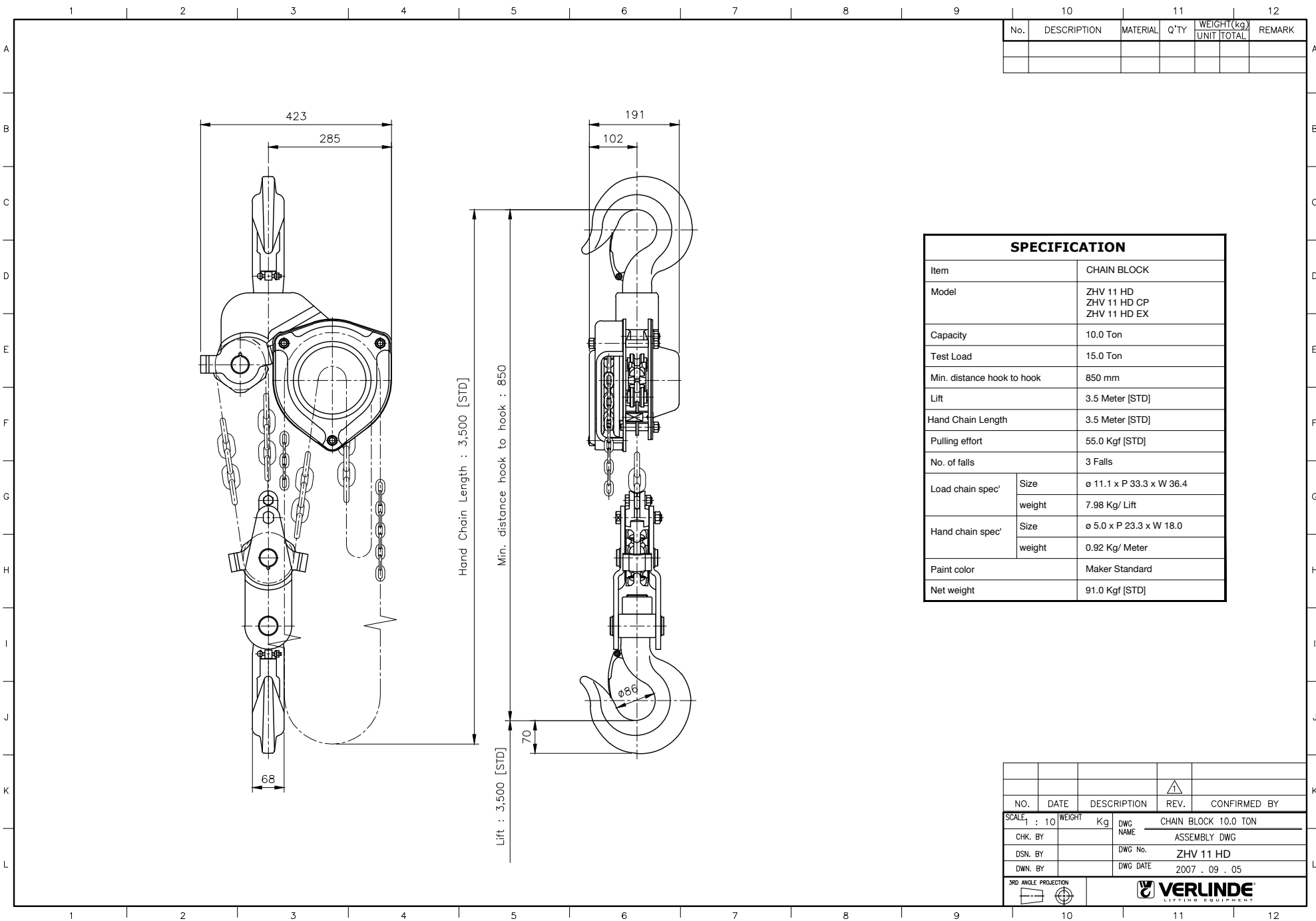




No.	DESCRIPTION	MATERIAL	Q'TY	WEIGHT (kg)		REMARK
				UNIT	TOTAL	

SPECIFICATION		
Item	CHAIN BLOCK	
Model	ZHV 10 HD ZHV 10 HD CP ZHV 10 HD EX	
Capacity	8.0 Ton	
Test Load	16.0 Ton	
Min. distance hook to hook	850 mm	
Lift	3.5 Meter [STD]	
Hand Chain Length	3.5 Meter [STD]	
Pulling effort	46.0 Kgf [STD]	
No. of falls	3 Falls	
Load chain spec'	Size	ø 11.1 x P 33.3 x W 36.4
	weight	7.98 Kg/ Lift
Hand chain spec'	Size	ø 5.0 x P 23.3 x W 18.0
	weight	0.92 Kg/ Meter
Paint color	Maker Standard	
Net weight	91.0 Kgf [STD]	

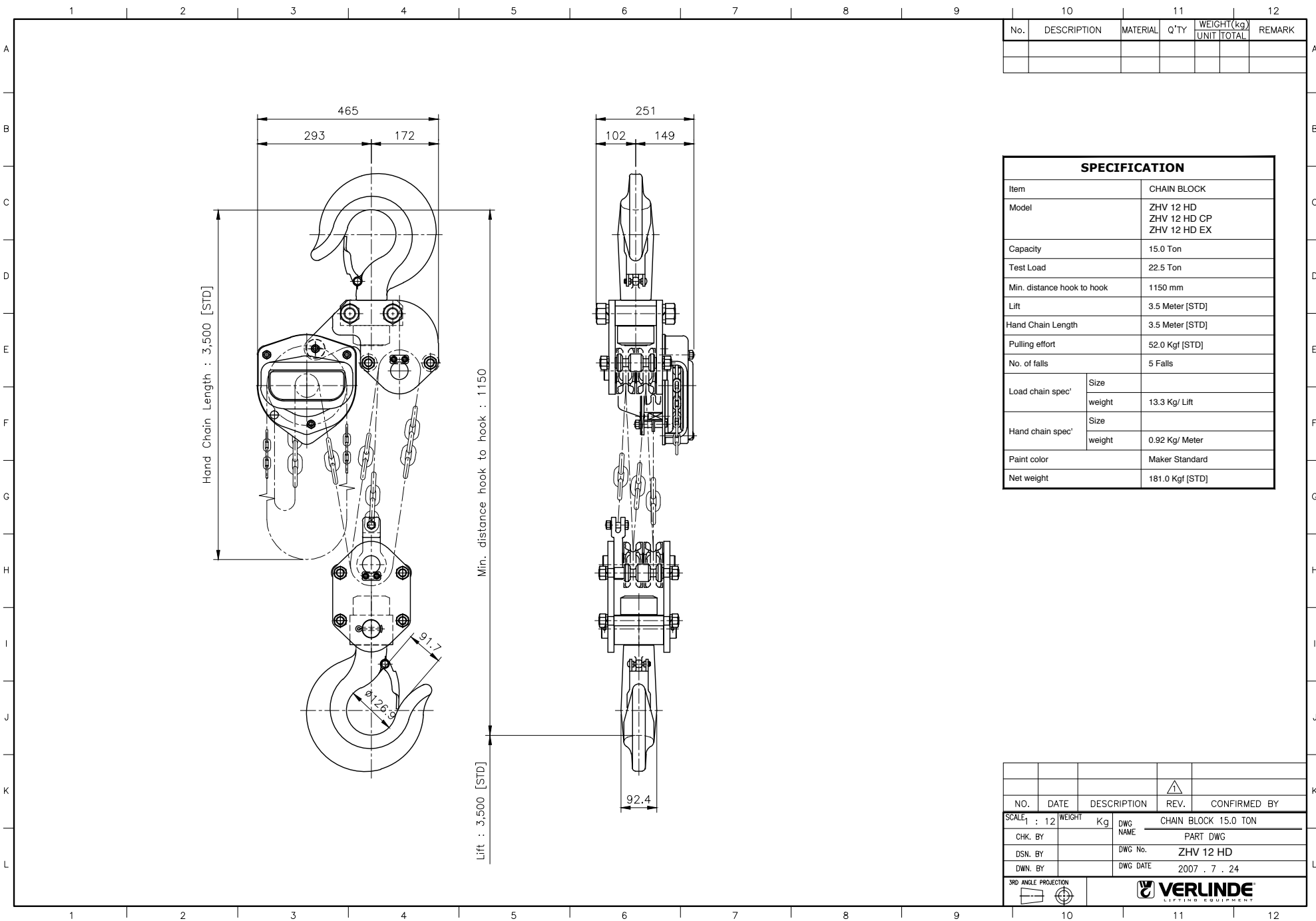
NO.	DATE	DESCRIPTION	REV.	CONFIRMED BY
SCALE 1 : 10		WEIGHT Kg	CHAIN BLOCK 8.0 TON	
CHK. BY		DWG NAME	ASSEMBLY DWG	
DSN. BY		DWG No.	ZHV 10 HD	
DWN. BY		DWG DATE	2007 . 09 . 05	
3RD ANGLE PROJECTION				



No.	DESCRIPTION	MATERIAL	Q'TY	WEIGHT (kg)		REMARK
				UNIT	TOTAL	

SPECIFICATION		
Item	CHAIN BLOCK	
Model	ZHV 11 HD ZHV 11 HD CP ZHV 11 HD EX	
Capacity	10.0 Ton	
Test Load	15.0 Ton	
Min. distance hook to hook	850 mm	
Lift	3.5 Meter [STD]	
Hand Chain Length	3.5 Meter [STD]	
Pulling effort	55.0 Kgf [STD]	
No. of falls	3 Falls	
Load chain spec'	Size	ø 11.1 x P 33.3 x W 36.4
	weight	7.98 Kg/ Lift
Hand chain spec'	Size	ø 5.0 x P 23.3 x W 18.0
	weight	0.92 Kg/ Meter
Paint color	Maker Standard	
Net weight	91.0 Kgf [STD]	

NO.	DATE	DESCRIPTION	REV.	CONFIRMED BY	
SCALE	1 : 10	WEIGHT	Kg	DWG NAME	CHAIN BLOCK 10.0 TON
CHK. BY				DWG No.	ASSEMBLY DWG
DSN. BY				DWG No.	ZHV 11 HD
DWN. BY				DWG DATE	2007 . 09 . 05
3RD ANGLE PROJECTION					



No.	DESCRIPTION	MATERIAL	Q'TY	WEIGHT (kg)		REMARK
				UNIT	TOTAL	

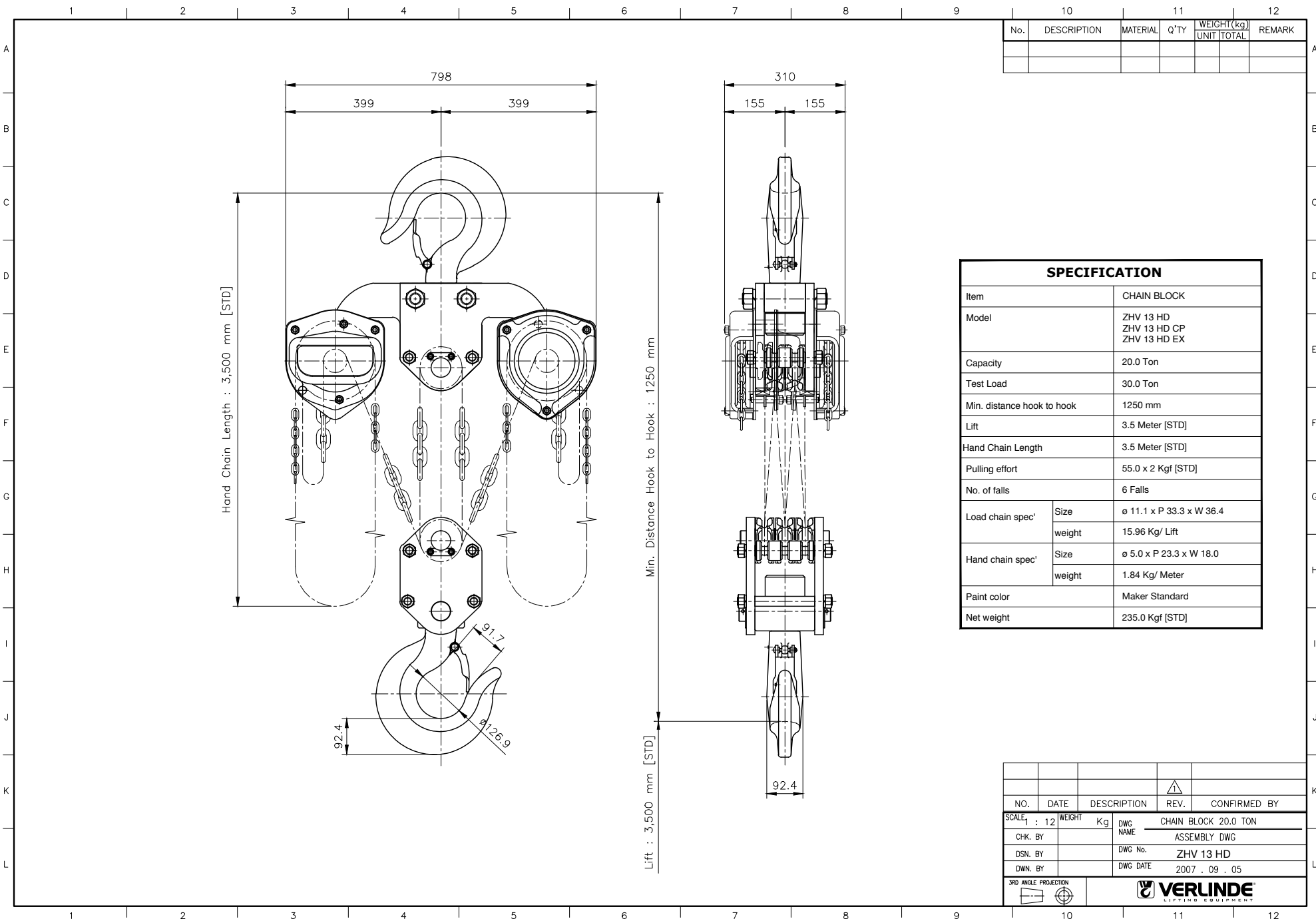
SPECIFICATION	
Item	CHAIN BLOCK
Model	ZHV 12 HD ZHV 12 HD CP ZHV 12 HD EX
Capacity	15.0 Ton
Test Load	22.5 Ton
Min. distance hook to hook	1150 mm
Lift	3.5 Meter [STD]
Hand Chain Length	3.5 Meter [STD]
Pulling effort	52.0 Kg [STD]
No. of falls	5 Falls
Load chain spec'	Size
	weight
Hand chain spec'	Size
	weight
Paint color	Maker Standard
Net weight	181.0 Kg [STD]

NO.	DATE	DESCRIPTION	REV.	CONFIRMED BY

SCALE	1 : 12	WEIGHT	Kg	DWG NAME	CHAIN BLOCK 15.0 TON
CHK. BY					PART DWG
DSN. BY					DWG No. ZHV 12 HD
DWN. BY					DWG DATE 2007 . 7 . 24

3RD ANGLE PROJECTION

VERLINDE
LIFTING EQUIPMENT



No.	DESCRIPTION	MATERIAL	Q'TY	WEIGHT (kg)		REMARK
				UNIT	TOTAL	

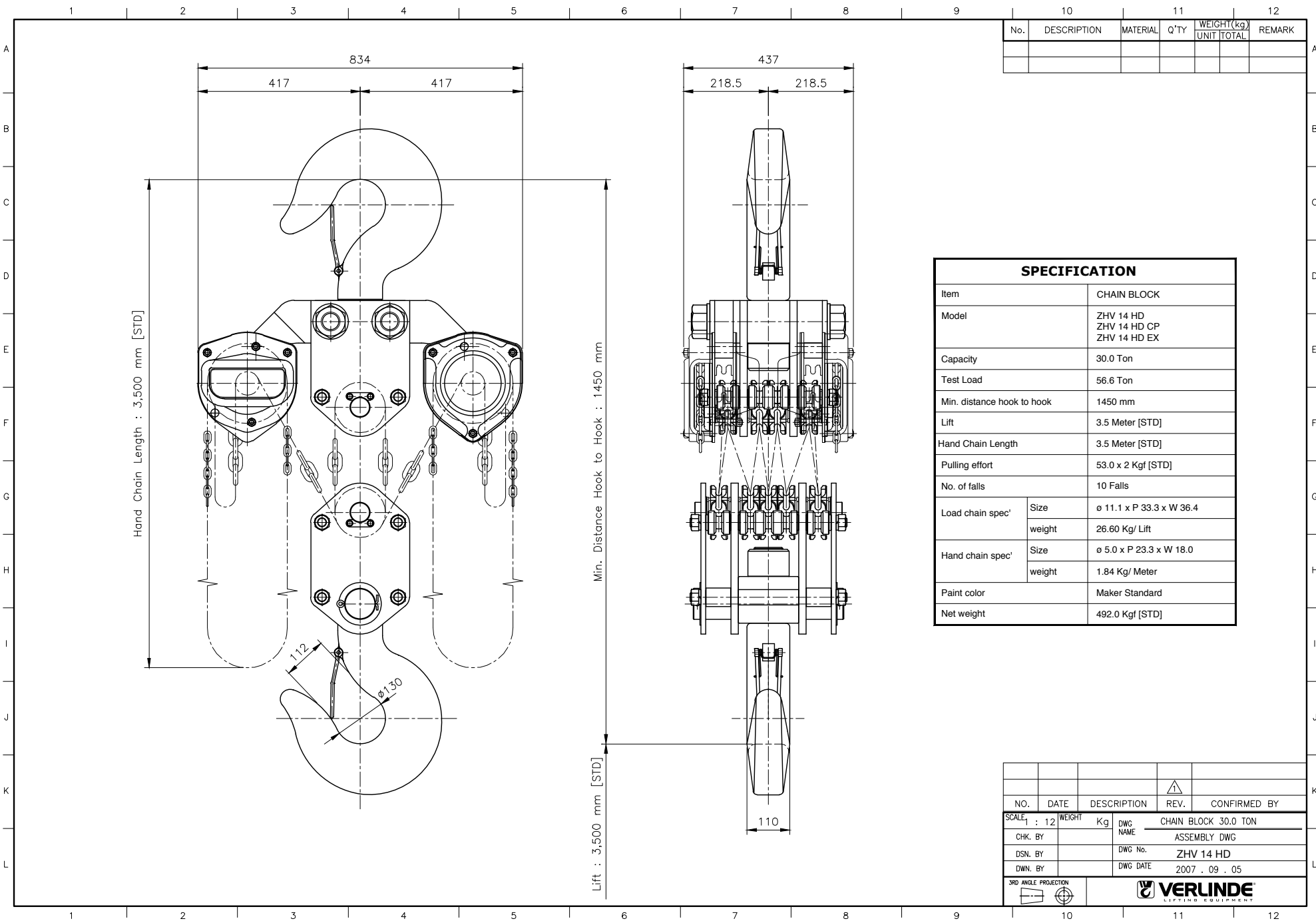
SPECIFICATION		
Item	CHAIN BLOCK	
Model	ZHV 13 HD ZHV 13 HD CP ZHV 13 HD EX	
Capacity	20.0 Ton	
Test Load	30.0 Ton	
Min. distance hook to hook	1250 mm	
Lift	3.5 Meter [STD]	
Hand Chain Length	3.5 Meter [STD]	
Pulling effort	55.0 x 2 Kgf [STD]	
No. of falls	6 Falls	
Load chain spec'	Size	$\phi 11.1 \times P 33.3 \times W 36.4$
	weight	15.96 Kg/ Lift
Hand chain spec'	Size	$\phi 5.0 \times P 23.3 \times W 18.0$
	weight	1.84 Kg/ Meter
Paint color	Maker Standard	
Net weight	235.0 Kgf [STD]	

NO.	DATE	DESCRIPTION	REV.	CONFIRMED BY

SCALE	1 : 12	WEIGHT	Kg	DWG NAME	CHAIN BLOCK 20.0 TON
CHK. BY				ASSEMBLY DWG	
DSN. BY				DWG No.	ZHV 13 HD
DWN. BY				DWG DATE	2007 . 09 . 05

3RD ANGLE PROJECTION

VERLINDE
LIFTING EQUIPMENT



No.	DESCRIPTION	MATERIAL	Q'TY	WEIGHT (kg)		REMARK
				UNIT	TOTAL	

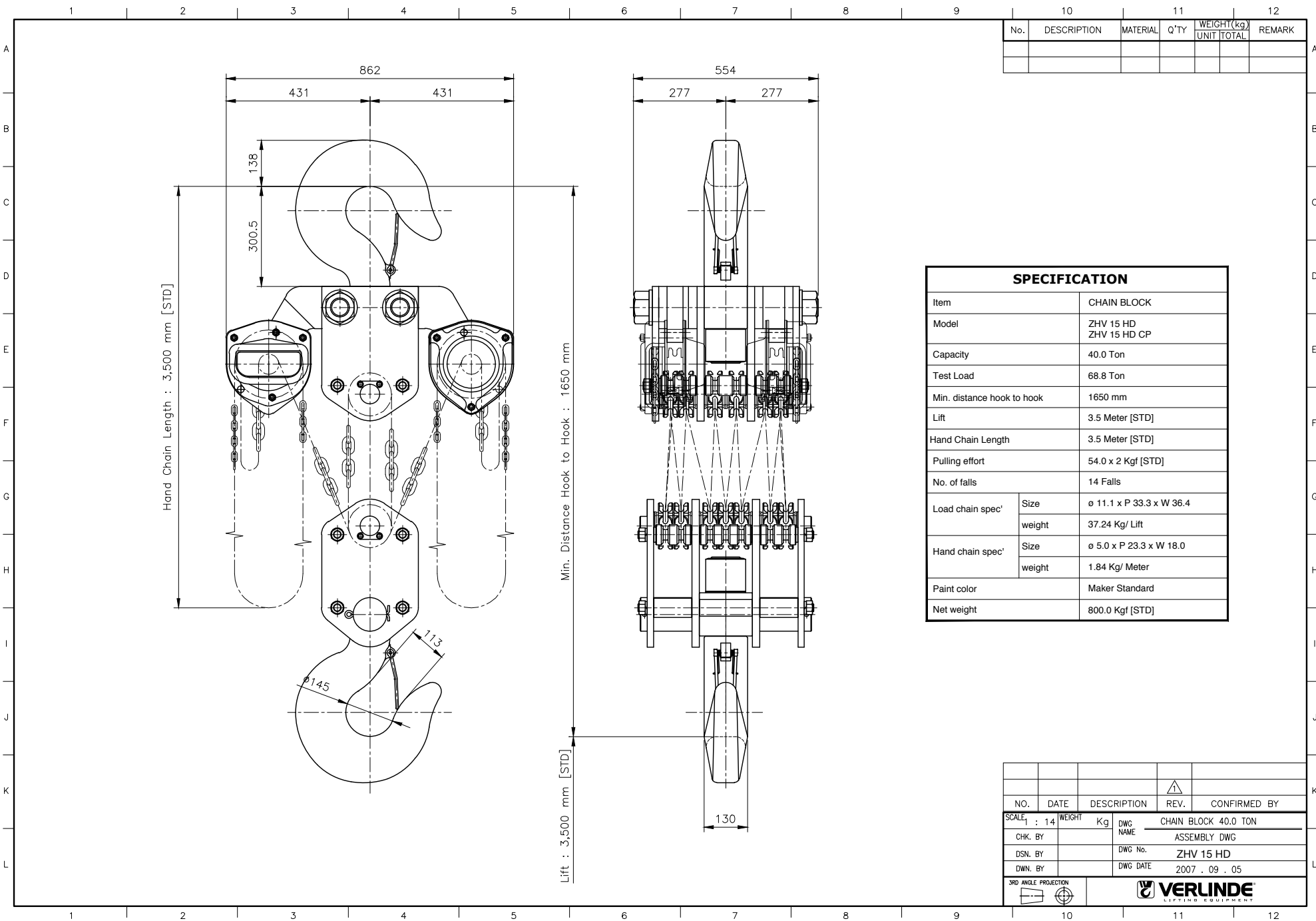
SPECIFICATION		
Item	CHAIN BLOCK	
Model	ZHV 14 HD ZHV 14 HD CP ZHV 14 HD EX	
Capacity	30.0 Ton	
Test Load	56.6 Ton	
Min. distance hook to hook	1450 mm	
Lift	3.5 Meter [STD]	
Hand Chain Length	3.5 Meter [STD]	
Pulling effort	53.0 x 2 Kgf [STD]	
No. of falls	10 Falls	
Load chain spec'	Size	ø 11.1 x P 33.3 x W 36.4
	weight	26.60 Kg/ Lift
Hand chain spec'	Size	ø 5.0 x P 23.3 x W 18.0
	weight	1.84 Kg/ Meter
Paint color	Maker Standard	
Net weight	492.0 Kgf [STD]	

NO.	DATE	DESCRIPTION	REV.	CONFIRMED BY

SCALE	1 : 12	WEIGHT	Kg	DWG NAME	CHAIN BLOCK 30.0 TON
CHK. BY				ASSEMBLY DWG	
DSN. BY				DWG No.	ZHV 14 HD
DWN. BY				DWG DATE	2007 . 09 . 05

3RD ANGLE PROJECTION

VERLINDE
LIFTING EQUIPMENT



No.	DESCRIPTION	MATERIAL	Q'TY	WEIGHT(kg)		REMARK
				UNIT	TOTAL	

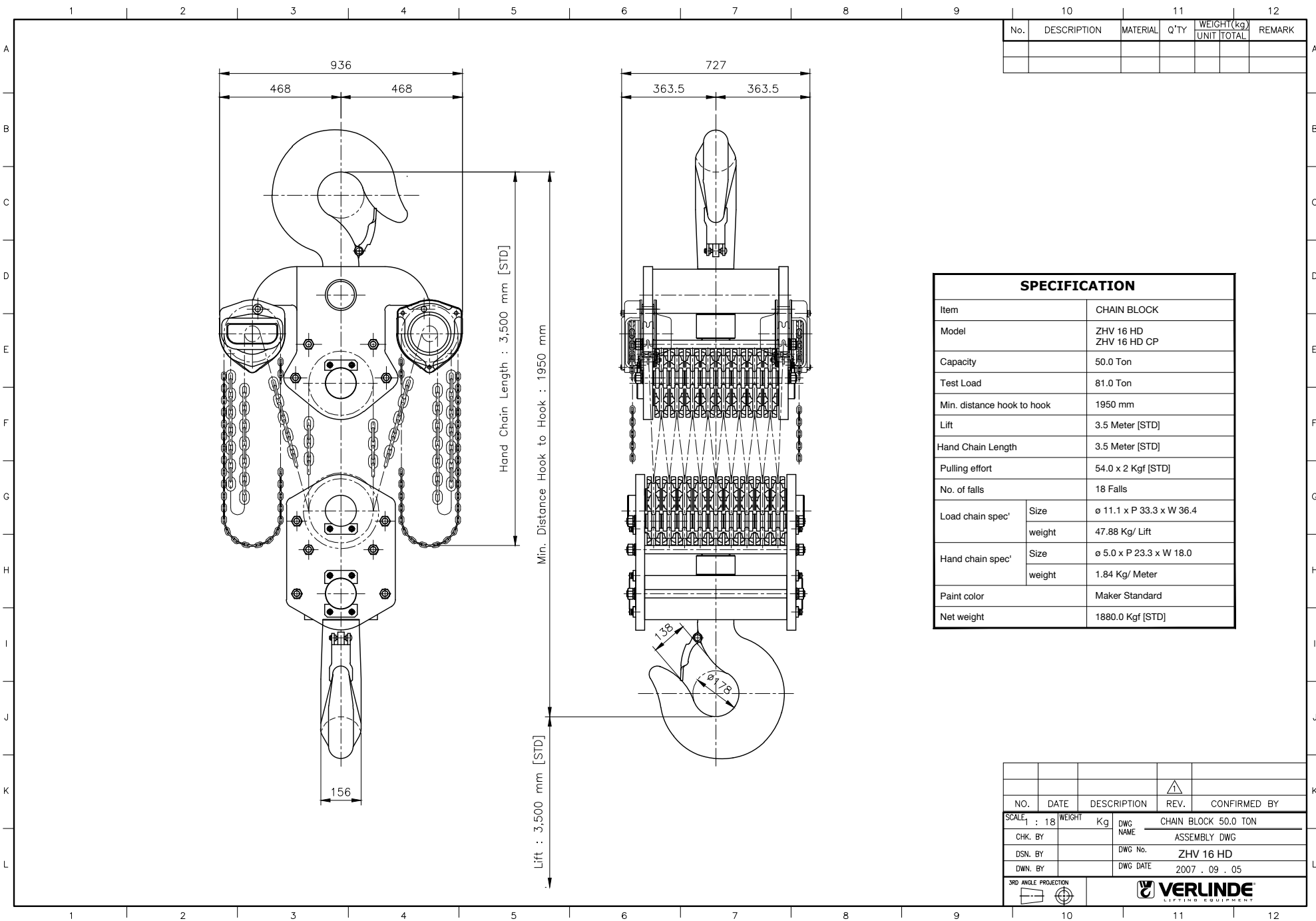
SPECIFICATION		
Item	CHAIN BLOCK	
Model	ZHV 15 HD ZHV 15 HD CP	
Capacity	40.0 Ton	
Test Load	68.8 Ton	
Min. distance hook to hook	1650 mm	
Lift	3.5 Meter [STD]	
Hand Chain Length	3.5 Meter [STD]	
Pulling effort	54.0 x 2 Kgf [STD]	
No. of falls	14 Falls	
Load chain spec'	Size	ϕ 11.1 x P 33.3 x W 36.4
	weight	37.24 Kg/ Lift
Hand chain spec'	Size	ϕ 5.0 x P 23.3 x W 18.0
	weight	1.84 Kg/ Meter
Paint color	Maker Standard	
Net weight	800.0 Kgf [STD]	

NO.	DATE	DESCRIPTION	REV.	CONFIRMED BY

SCALE	1 : 14	WEIGHT	Kg	DWG NAME	CHAIN BLOCK 40.0 TON
CHK. BY				DWG No.	ASSEMBLY DWG
DSN. BY				DWG No.	ZHV 15 HD
DWN. BY				DWG DATE	2007 . 09 . 05

3RD ANGLE PROJECTION

VERLINDE
LIFTING EQUIPMENT



No.	DESCRIPTION	MATERIAL	Q'TY	WEIGHT (kg)		REMARK
				UNIT	TOTAL	

SPECIFICATION		
Item	CHAIN BLOCK	
Model	ZHV 16 HD ZHV 16 HD CP	
Capacity	50.0 Ton	
Test Load	81.0 Ton	
Min. distance hook to hook	1950 mm	
Lift	3.5 Meter [STD]	
Hand Chain Length	3.5 Meter [STD]	
Pulling effort	54.0 x 2 Kgf [STD]	
No. of falls	18 Falls	
Load chain spec'	Size	ø 11.1 x P 33.3 x W 36.4
	weight	47.88 Kg/ Lift
Hand chain spec'	Size	ø 5.0 x P 23.3 x W 18.0
	weight	1.84 Kg/ Meter
Paint color	Maker Standard	
Net weight	1880.0 Kgf [STD]	

NO.	DATE	DESCRIPTION	REV.	CONFIRMED BY

SCALE	1 : 18	WEIGHT	Kg	DWG NAME	CHAIN BLOCK 50.0 TON
CHK. BY					ASSEMBLY DWG
DSN. BY				DWG No.	ZHV 16 HD
DWN. BY				DWG DATE	2007 . 09 . 05

3RD ANGLE PROJECTION

VERLINDE
LIFTING EQUIPMENT